

HOW TO:

CREATE A SUSTAINABILITY PLAN



1. VISION

The vision setting is the real start of figuring out where you're going.



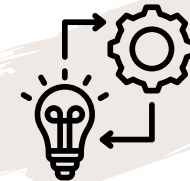
2. MISSION

How will you accomplish your set-out vision.



3. OBJECTIVES & TARGETS

Determine key objectives in order to support your mission.
And establish specific and measurable targets.



4. IMPLEMENTATION & MONITORING

Describe your sustainability plans implementation approach
and how you intend to track and monitor the progress.



5. REPORTING

Commit to reporting in order to identify areas for future operational
improvement and to communicate your progress with key stakeholders.



6. COMMITMENT FROM LEADERSHIP

Your sustainability plan will be signed-off by your leadership team,
therefore committing to the set-out plan.